

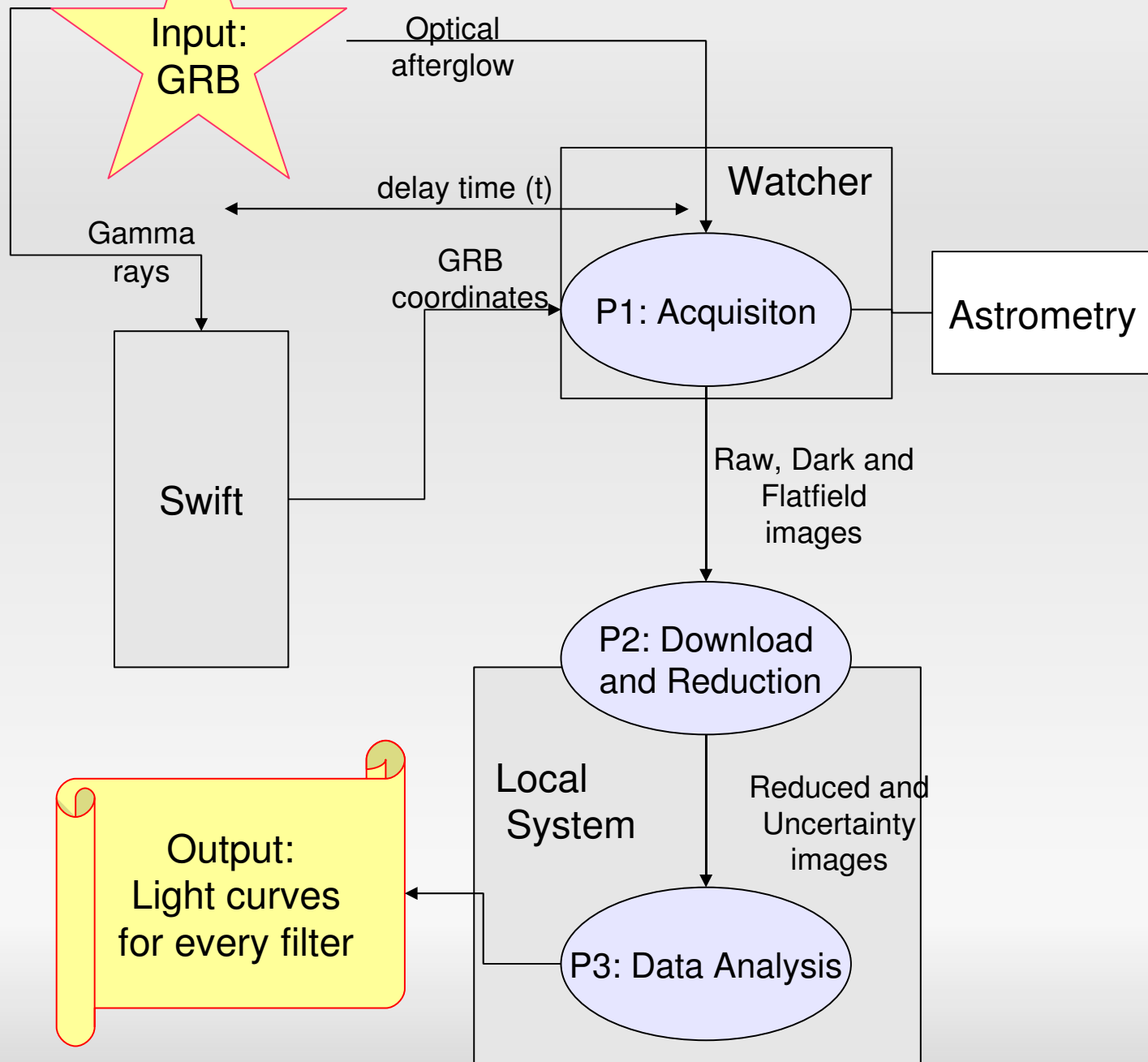
Watcher's Photometry

Alejandro Ferrero
School of Physics
University College Dublin

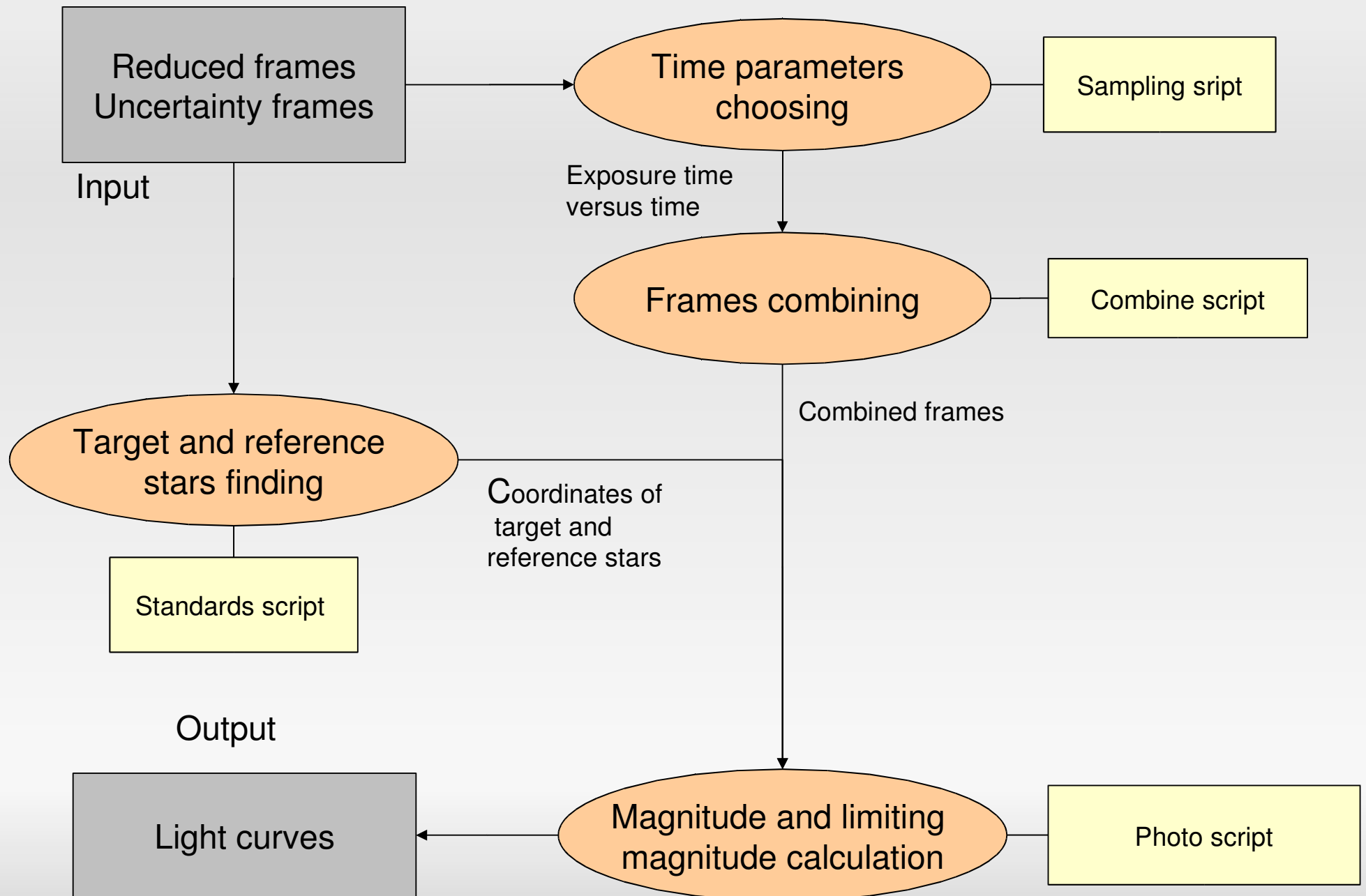
Outline

- Pipeline
- Instrumental measurement
- Magnitude calculation
- Limiting Magnitude

General Photometry



Light curves



#!/bin/bash

To produce the Input.txt
InputGer

To download data
Download

To sort data by folders integration time and filter
Datalocate

#To do data reduction
GeneralReduction

#To choose the temporal sampling
Sampling #(if we want to combine)
NoSampling #(if we dont want to combine)

#To combine frames (It locates frames only if we used "NoSampling")
Combine

#To choose "standars"
Standards

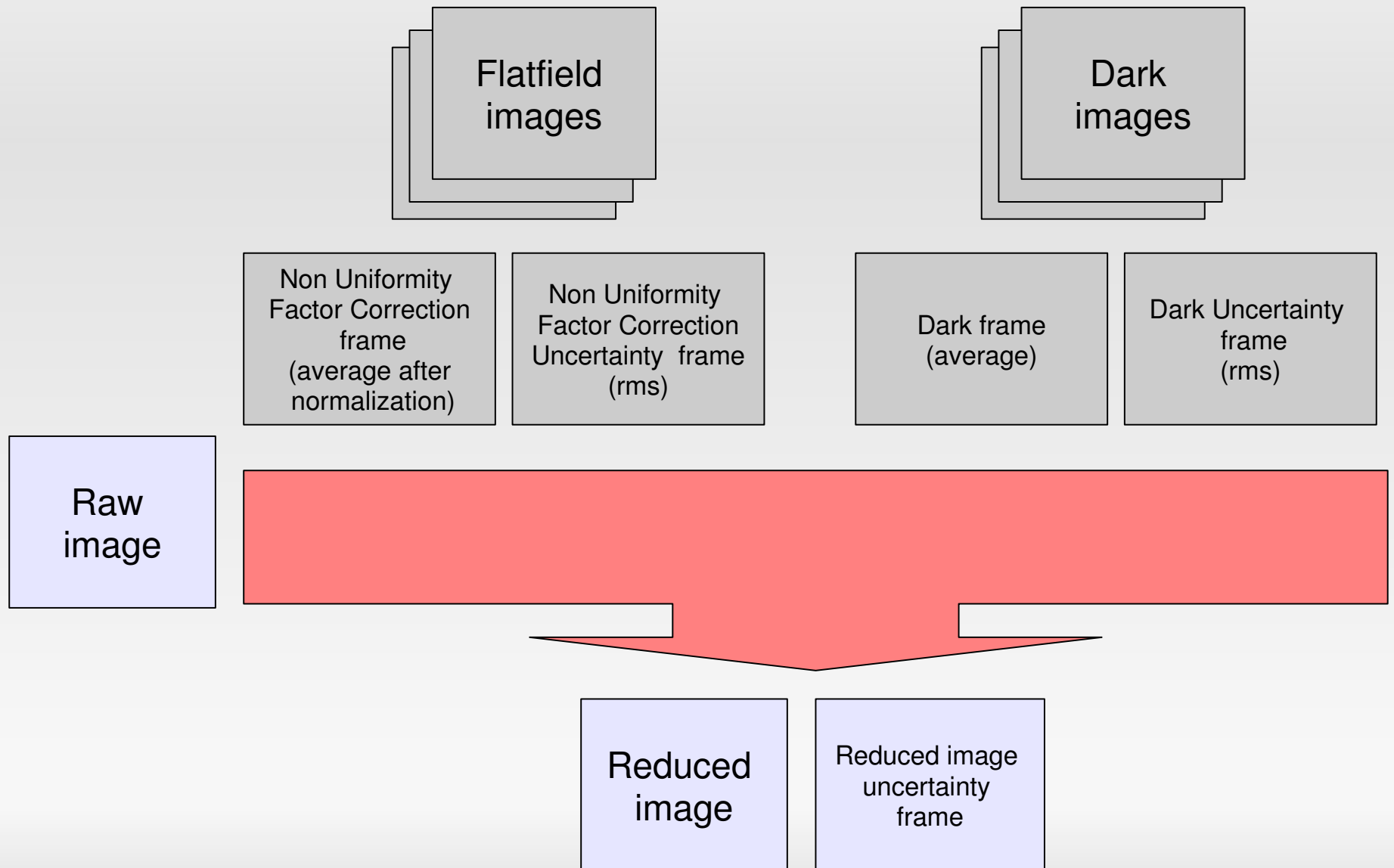
#To do photometry with Rains
Photo2 #Photo2phot to use Aperture photometry

#To calculare the magnitude
CalculateMag

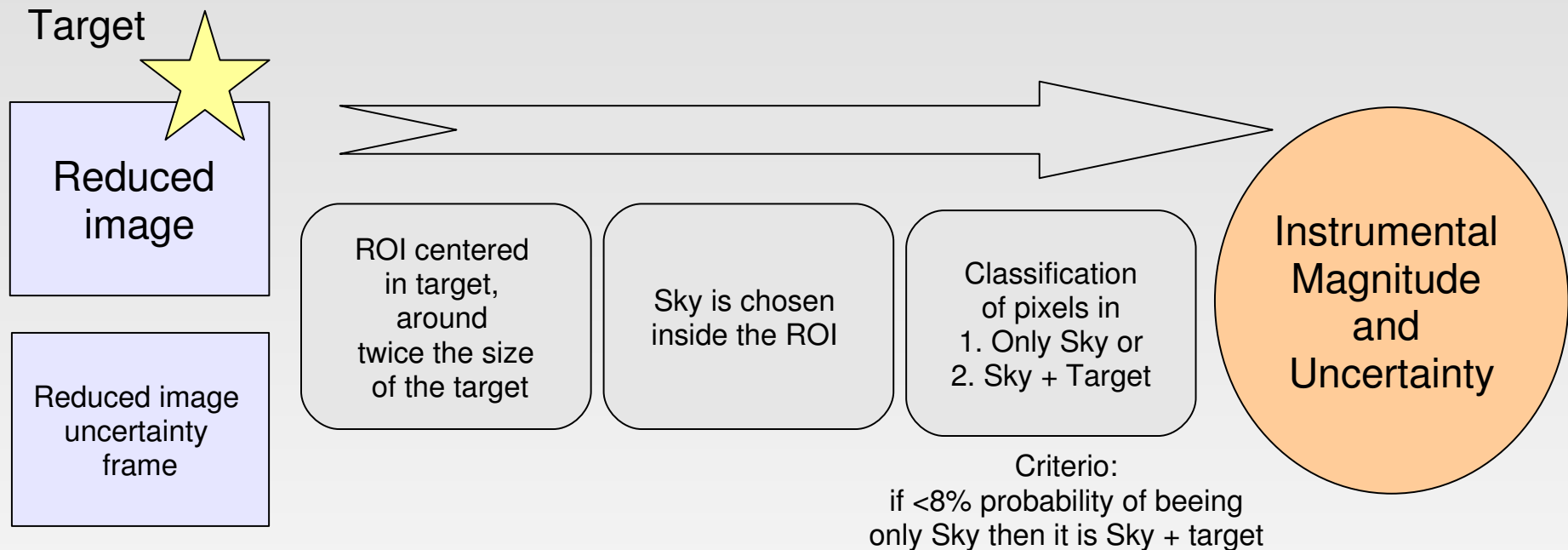
#To report and to do figures
Report2
Figures

Script

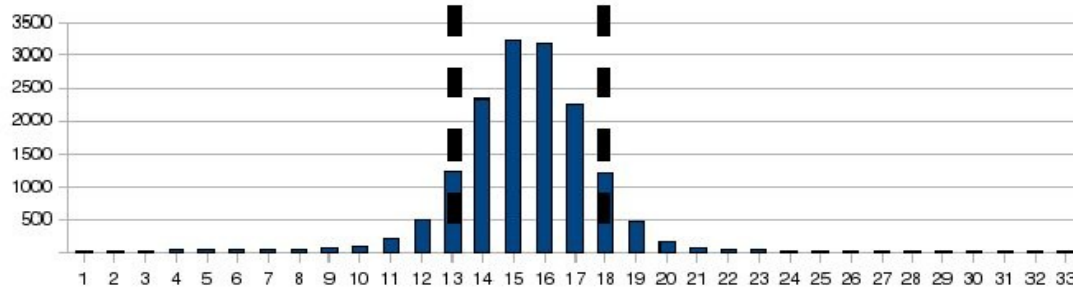
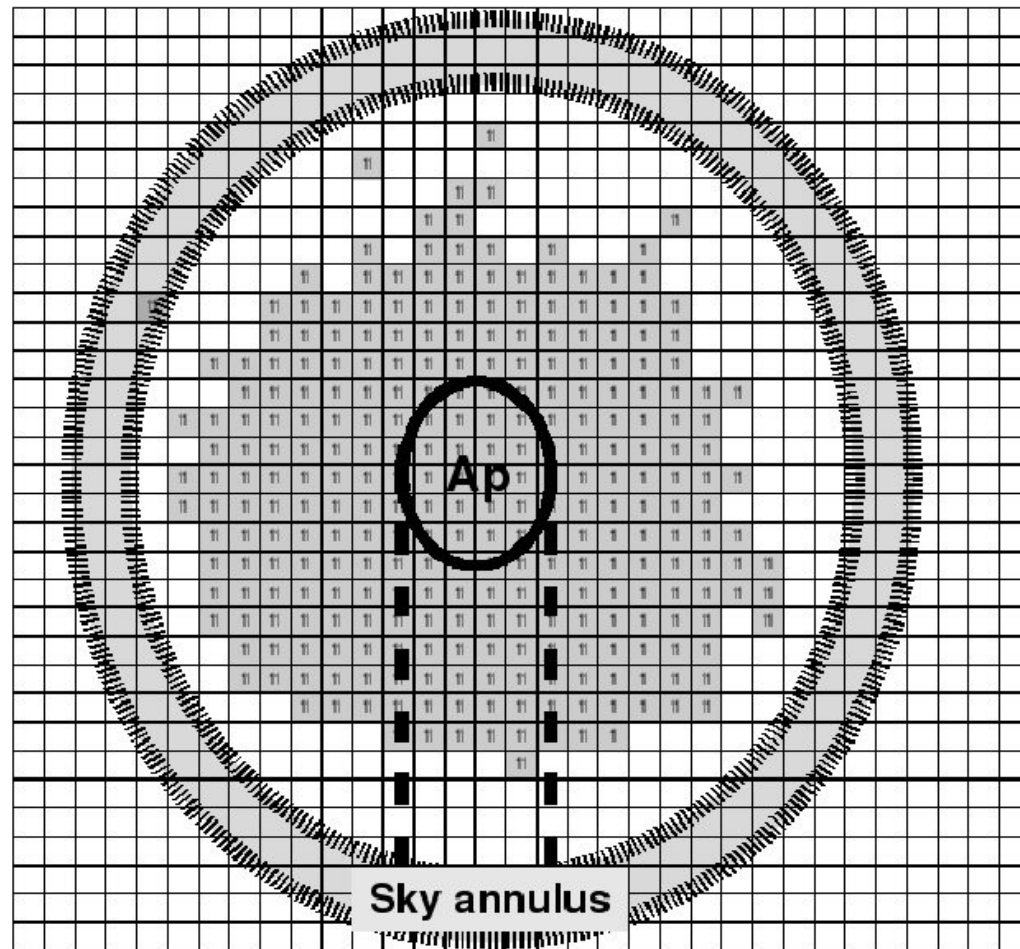
Reduction



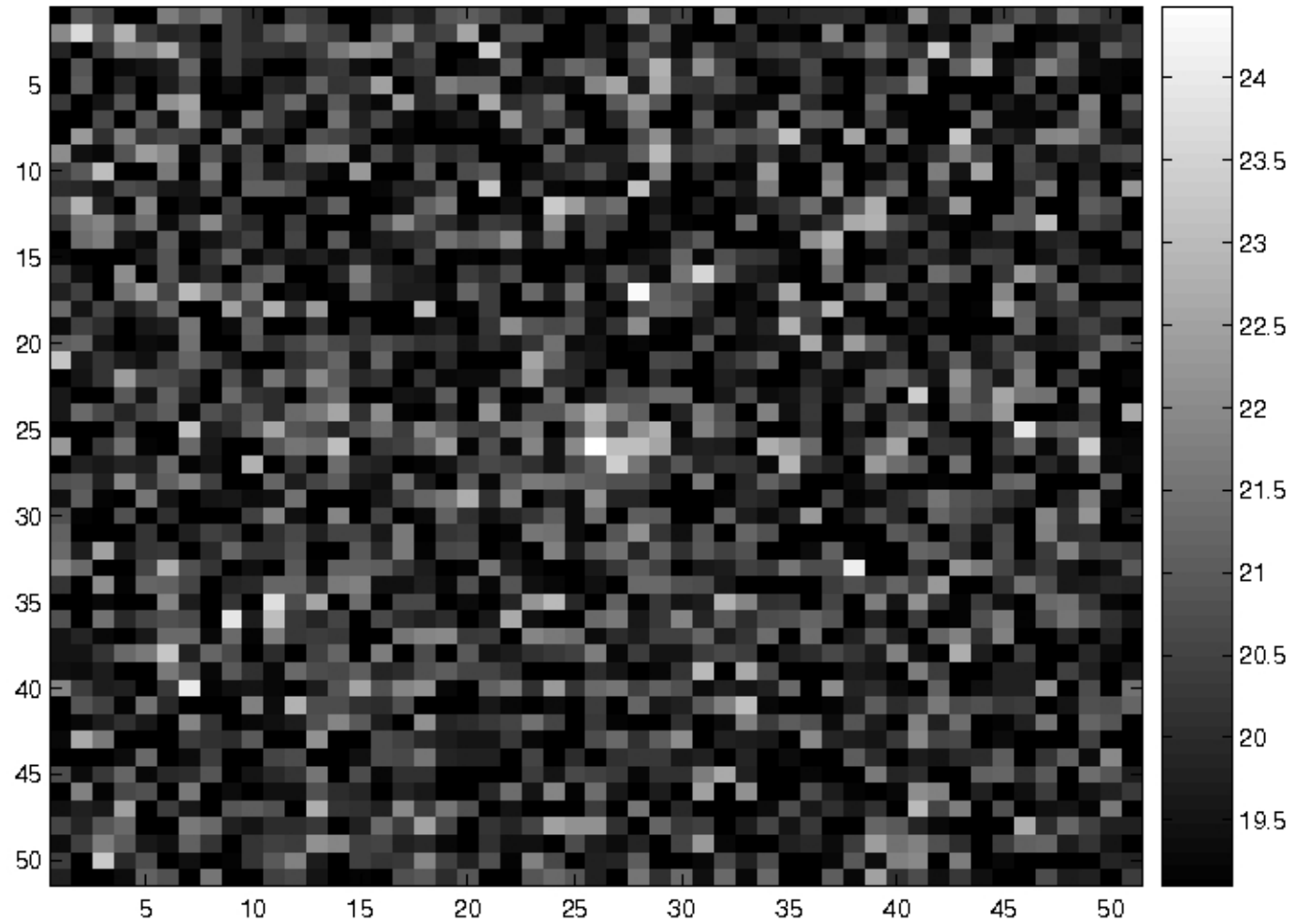
Measurement step



Watcher procedure vs AP

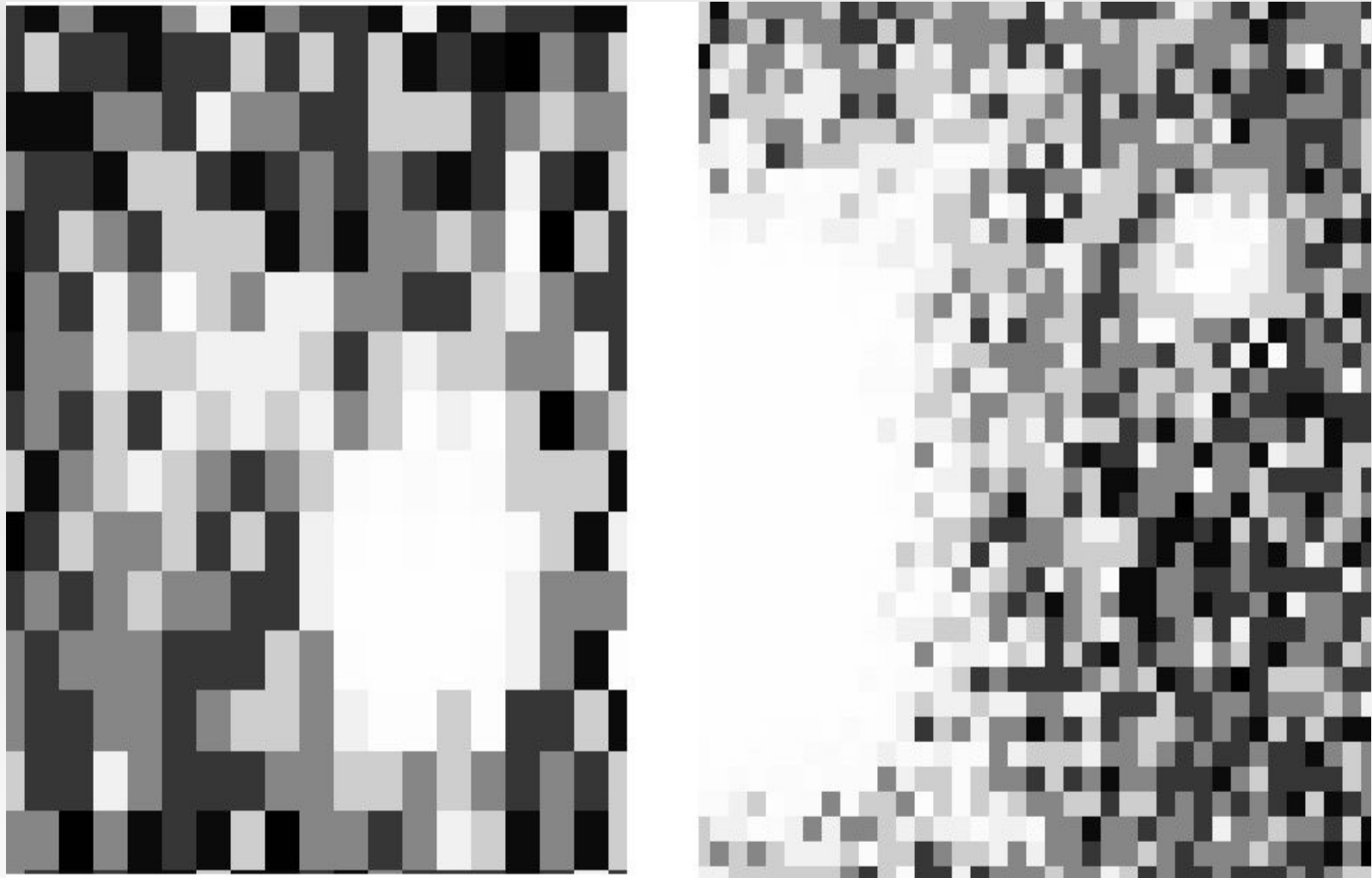


Results



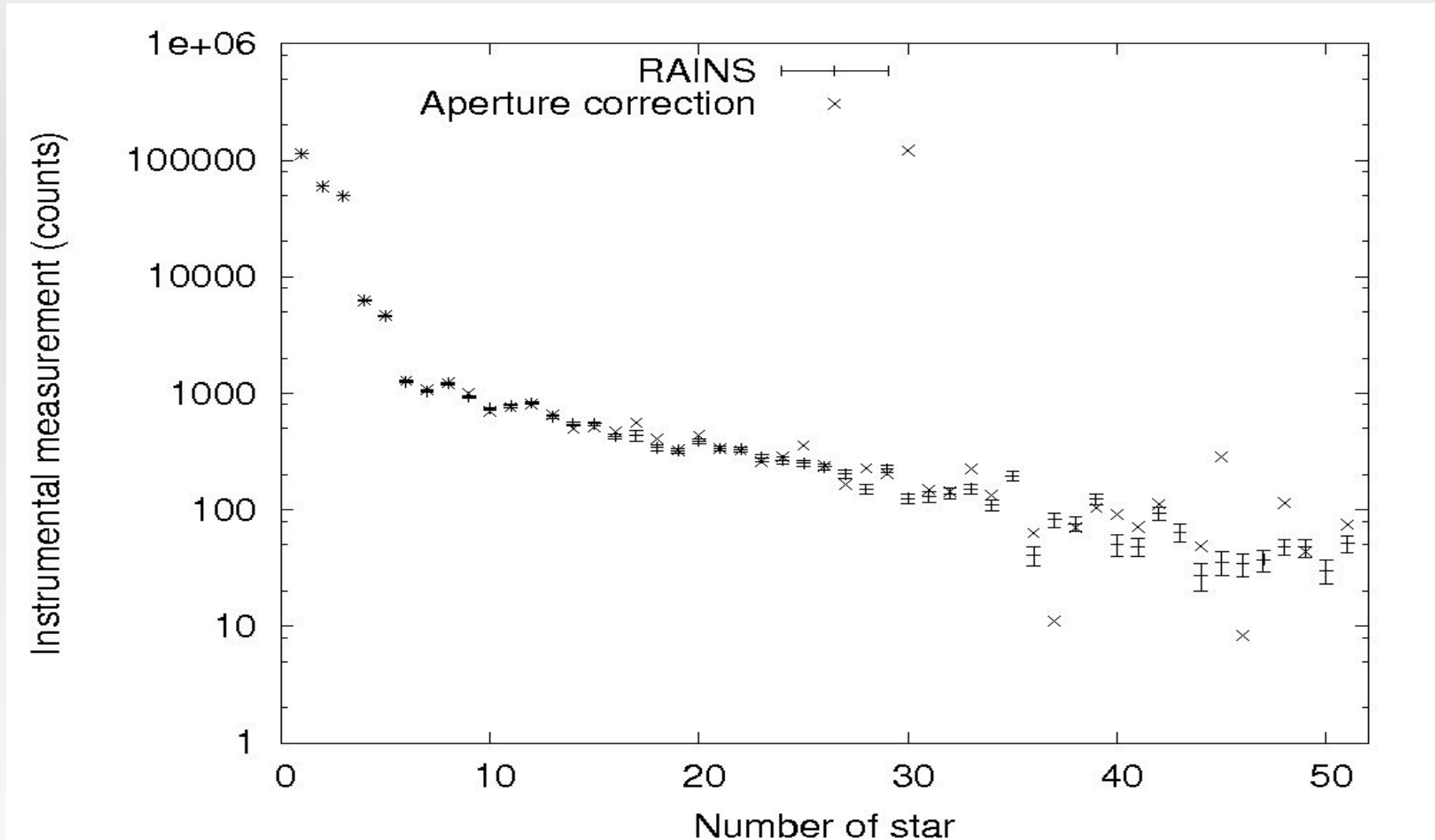
SNR=3.8, $V=18.2\pm 0.3$ mag.

Results



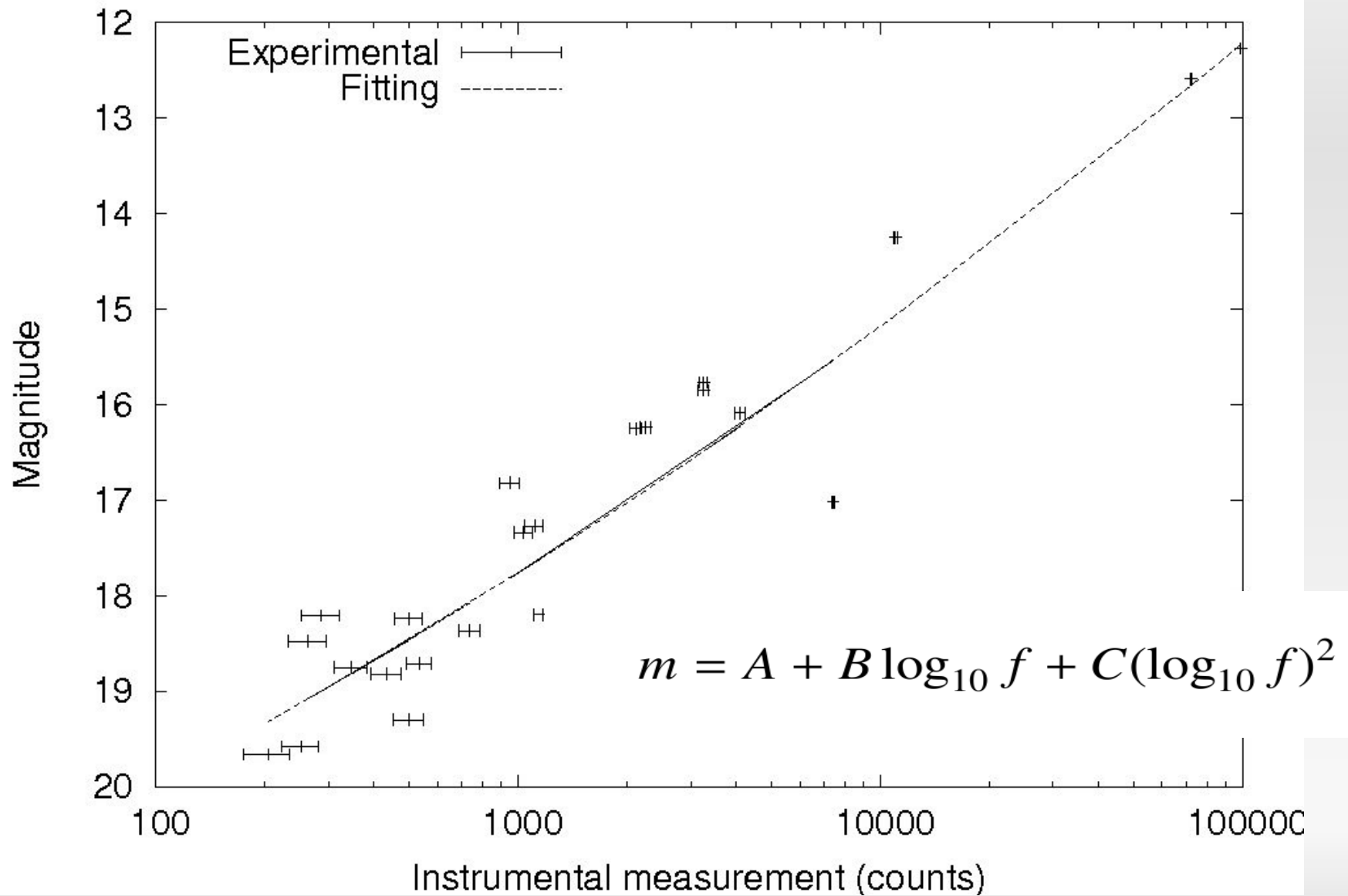
Two cases where aperture photometry fails.

Results

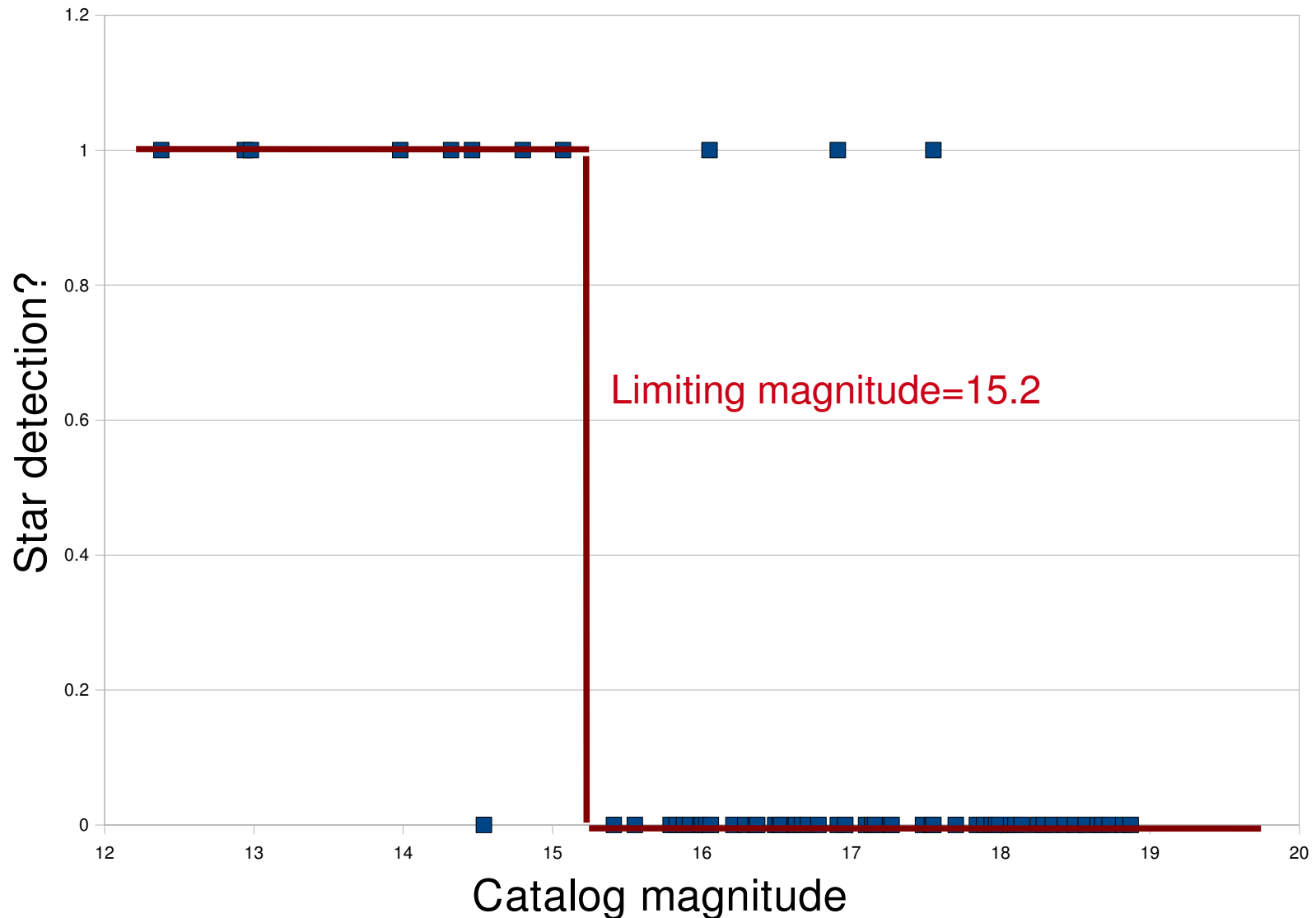


Original (straight line) and corrected (scatter dots with error bars) instrumental measurement.

Magnitude Calculation



Limiting Magnitude Calculation



10 second exposure, I filter. Detection: $\text{SNR} > 3$, $N > 8$. 67 stars. 4 stars inconsistent with the limiting magnitude.

Alejandro Ferrero

alejandro.ferrero@ucd.ie

School of Physics, University College Dublin